

# RODAS / WHEELS / RUEDAS

## BP

Resina Termoplástica - Núcleo de Polipropileno

Thermoplastic Resin - Polypropylene Core

Resina Termoplástica - Núcleo de Polipropileno

(75 Shore "A") (-10° ◀ ▶ +50°C)

Código / Code		mm	mm	mm	kg	mm	kg		
R	210 BPF	2"	50	22		45	1/4"	25	0,035
R	310 BPF	3"	75	22		60	1/4"	25	0,060
R	412 BPF	4"	100	28		90	1/2"	38	0,155
R	512 BPF	5"	125	28		100	1/2"	38	0,210
R	612 BPF	6"	150	28		125	1/2"	38	0,260
R	414 BPN	4"	100	38		125	1/2"	44	0,205
R	414 BPE	4"	100	38		125	3/8"	46	0,250
R	514 BPN	5"	125	38		150	1/2"	44	0,265
R	514 BPE	5"	125	38		150	3/8"	46	0,310
R	614 BPN	6"	150	38		165	1/2"	44	0,340
R	614 BPE	6"	150	38		165	3/8"	46	0,390



R 514 BPN



R 312 BPS

(75 Shore "A") (-20° ◀ ▶ +70°C)

R	312 BPC	3"	75	30		80	3/8"	38	-
R	312 BPS	3"	75	30		80	3/8"	38	0,125



R 816 BPR

(90 Shore "A") (-20° ◀ ▶ +70°C)

R	816 BPN	8"	205	45		200	7/8"	62	0,870
R	816 BPR	8"	205	45		200	7/8"	62	0,950



R 52 BPS

(90 Shore "A") (-20° ◀ ▶ +70°C)

R	52 BPN	5"	130	50		200	5/8"	62	0,600
R	52 BPR	5"	130	50		200	5/8"	62	0,630
R	52 BPS	5"	130	50		200	15mm	62	0,660
R	62 BPN	6"	155	50		250	5/8"	62	0,860
R	62 BPR	6"	155	50		250	5/8"	62	0,900
R	62 BPS	6"	155	50		250	15mm	62	0,930
R	82 BPN	8"	205	50		300	7/8"	62	1,400
R	82 BPR	8"	205	50		300	7/8"	62	1,500
R	82 BPS	8"	205	50		300	20mm	62	1,550
R	102 BPN	10"	255	50		400	7/8"	62	2,200
R	102 BPR	10"	255	50		400	7/8"	62	2,300
R	102 BPS	10"	255	50		400	20mm	62	2,350

# RODAS / WHEELS / RUEDAS

**JP**

Borracha Termoplástica - Núcleo de Polipropileno  
 Thermoplastic Rubber - Polypropylene Core  
 Caucho Termoplástico - Núcleo de Polipropileno

(85 Shore "A") (-20° ◀ ▶ +70°C)



R 512 JPS D

Código / Code		mm	mm		kg	mm	kg		
R	412 JPS D	4"	100	32		100	8,3mm	36,5	0,200
R	512 JPS D	5"	125	32		100	8,3mm	36,5	0,285
R	612 JPS D	6"	150	32		100	8,3mm	36,5	0,365

**PP**

Polipropileno - Núcleo de Polipropileno  
 Polypropylene - Polypropylene Core  
 Polipropileno - Núcleo de Polipropileno

(65 Shore "D") (-20° ◀ ▶ +70°C)



R 512 PPF

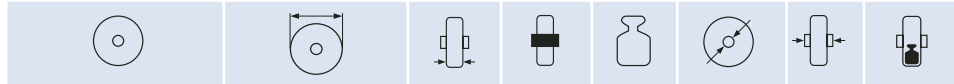
R	114 PPF	1.1/4"	32	14		25	3/16"	17	0,005
R	158 PPF	1.5/8"	40	18		45	7/32"	19,7	0,020
R	210 PPF	2"	50	20		50	1/4"	24	0,025
R	310 PPF	3"	75	22		70	1/4"	25	0,060
R	312 PPF	3"	75	32		90	3/8"	38	0,075
R	412 PPF	4"	100	32		105	1/2"	38	0,130
R	512 PPF	5"	125	32		125	1/2"	38	0,175
R	612 PPF	6"	150	32		150	1/2"	38	0,280
R	316 PPS	3"	75	42		300	15mm	48	0,150

# RODAS / WHEELS / RUEDAS



Poliuretano Termoplástico - Núcleo de Polipropileno  
 Thermoplastic Polyurethane - Polypropylene Core  
 Poliuretano Termoplástico - Núcleo de Polipropileno

(95 Shore "A") (-20° ◀ ▶ +70°C)



R 514 UPN

Código / Code		mm	mm		kg	mm	kg		
R	210 UPF	2"	50	22		45	1/4"	25	0,035
R	310 UPF	3"	75	22		60	1/4"	25	0,060
R	412 UPF	4"	100	28		90	1/2"	38	0,150
R	512 UPF	5"	125	28		100	1/2"	38	0,205
R	612 UPF	6"	150	28		125	1/2"	38	0,255
R	414 UPN	4"	100	38		125	1/2"	44	0,200
R	414 UPE	4"	100	38		125	3/8"	46	0,245
R	514 UPN	5"	125	38		150	1/2"	44	0,260
R	514 UPE	5"	125	38		150	3/8"	46	0,305
R	614 UPN	6"	150	38		165	1/2"	44	0,330
R	614 UPE	6"	150	38		165	3/8"	46	0,380



R 312 UPS

(95 Shore "A") (-20° ◀ ▶ +70°C)

R	312 UPC	3"	75	30		80	3/8"	38	-
R	312 UPS	3"	75	30		80	3/8"	38	0,130



R 52 UPS

(95 Shore "A") (-20° ◀ ▶ +70°C)

R	52 UPN	5"	130	50		350	5/8"	62	0,600
R	52 UPR	5"	130	50		350	5/8"	62	0,630
R	52 UPS	5"	130	50		350	15mm	62	0,660
R	62 UPN	6"	155	50		400	5/8"	62	0,840
R	62 UPR	6"	155	50		400	5/8"	62	0,880
R	62 UPS	6"	155	50		400	15mm	62	0,910
R	82 UPN	8"	205	50		500	7/8"	62	1,350
R	82 UPR	8"	205	50		500	7/8"	62	1,450
R	82 UPS	8"	205	50		500	20mm	62	1,500
R	102 UPN	10"	255	50		600	7/8"	62	2,100
R	102 UPR	10"	255	50		600	7/8"	62	2,200
R	102 UPS	10"	255	50		600	20mm	62	2,250

# RODAS / WHEELS / RUEDAS

## NP

Poliuretano Termoplástico - Núcleo de Nylon  
 Thermoplastic Polyurethane - Polyamide Core  
 Poliuretano Termoplástico - Núcleo de Nylon



R 414 NPE

Código / Code		mm	mm		kg	mm	kg		
R	414 NPE	4"	100	38		125	3/8"	46	0,250
R	514 NPE	5"	125	38		150	3/8"	46	0,310
R	614 NPE	6"	150	38		165	3/8"	46	0,390

## NN

Nylon  
 Polyamide  
 Nylon

(75 Shore "D") (-30° ◀ ▶ +90°C)



R 512 NNF

R	210 NNF	2"	50	20		85	1/4"	24	0,035
R	310 NNF	3"	75	22		100	1/4"	25	0,080
R	312 NNF	3"	75	32		150	3/8"	38	0,100
R	412 NNF	4"	100	32		175	1/2"	38	0,170
R	512 NNF	5"	125	32		200	1/2"	38	0,230
R	612 NNF	6"	150	32		300	1/2"	38	0,375
R	414 NNF	4"	100	36		200	12mm	44,4	0,140
R	514 NNF	5"	125	40		300	12mm	44,4	0,250

## NR

Nylon Reforçada  
 Reinforced Polyamide  
 Nylon Reforzada

(75 Shore "D") (-30° ◀ ▶ +90°C)



R 52 NRS

R	158 NRF*	1.5/8"	40	18		125	7/32"	19,7	0,030
R	316 NRS	3"	75	42		500	15mm	48	0,190
R	52 NRF	5"	125	50		500	5/8"	62	0,460
R	52 NRS	5"	125	50		500	15mm	62	0,510
R	62 NRF	6"	150	50		600	5/8"	62	0,600
R	62 NRS	6"	150	50		600	15mm	62	0,655
R	82 NRF	8"	200	46		800	20mm	58	0,830
R	82 NRS	8"	200	50		800	20mm	60	1,050
R	102 NRF	10"	250	50		1100	25mm	60	1,500
R	102 NRS	10"	250	50		1100	25mm	60	1,900

\*Cor preta / Black colour / Color negro

# RODAS / WHEELS / RUEDAS

## GT

Gel, PVC Transparente - Núcleo de Policarbonato  
 Gel, PVC Transparent - Polycarbonate Core  
 Gel, PVC Transparente - Núcleo de Policarbonato

(75 Shore "A") (-10° ◀ ▶ +50°C)



R 310 GTF

Código / Code		mm	mm	mm	kg	mm	mm	kg	
R	210 GTF	2"	50	22		45	1/4"	25	0,040
R	310 GTF	3"	75	22		60	1/4"	25	0,085
R	312 GTF	3"	75	32		80	3/8"	38	0,125

## NV

Nylon Reforçada, com Fibra de Vidro  
 Reinforced Polyamide, with Fiberglass  
 Nylon Reforzada, con Fibra de Vidrio

**Uso continuado em alta temperatura**  
**Continued use in high temperature / Uso continuo en alta temperatura**



R 412 NVF

Código / Code		mm	mm	mm	kg	mm	mm	kg	
R	312 NVF	3"	75	32		150	3/8"	38	0,145
R	412 NVF	4"	100	32		175	1/2"	38	0,240

(85 Shore "D") (-40° ◀ ▶ +250°C)



R 62 NVY

(-40° ◀ ▶ +180°C)

R	52 NVY	5"	125	50		500	15mm	62	0,620
R	62 NVY	6"	150	50		600	15mm	62	0,780

# RODAS / WHEELS / RUEDAS

**CC**

Celeron  
Phenolic Resin  
Resina Fenólica

(25 Brinell) (-30° ◀ ▶ +120°C)



R 52 CCS

Código / Code		mm	mm		kg	mm	kg		
R	210 CCF	2"	50	20		85	1/4"	25	0,040
R	310 CCF	3"	75	22		100	1/4"	25	0,095
R	312 CCF	3"	75	32		150	3/8"	38	0,135
R	414 CCF	4"	100	38		200	1/2"	44	0,325
R	514 CCF	5"	125	38		300	1/2"	44	0,510
R	316 CCL	3"	75	46		700	5/8"	48	0,320
R	52 CCL	5"	125	50		500	5/8"	62	0,890
R	52 CCS	5"	125	50		500	15mm	62	1,000
R	62 CCL	6"	150	50		600	5/8"	62	1,120
R	62 CCS	6"	150	50		600	15mm	62	1,250
R	82 CCL	8"	200	50		800	7/8"	62	1,940
R	82 CCS	8"	200	50		800	20mm	62	2,070
R	63 CCL	6"	150	70		800	1"	78	1,740
R	63 CCS	6"	150	70		800	25mm	78	2,010
R	83 CCL	8"	200	70		1000	1"	78	2,630
R	83 CCS	8"	200	70		1000	25mm	78	2,870
R	124 CCS	12"	300	100		1700	30mm	110	8,300

# RODAS / WHEELS / RUEDAS

## BE

Borracha - Núcleo Estampado e Rebitado

Rubber - Riveted Steel Discs Core

Caucho - Núcleo de Chapas de Acero Remachadas

(75 Shore "A") (-20° ◀ ▶ +80°C)



R 412 BEN

Código / Code		mm	mm		kg	mm	kg		
R	412 BEN	4"	100	30	■	90	1/2"	38	0,320
R	412 BER	4"	100	30	▨	90	1/2"	38	0,360
R	512 BEN	5"	125	30	■	110	1/2"	38	0,470
R	512 BER	5"	125	30	▨	110	1/2"	38	0,510
R	612 BEN	6"	150	30	■	140	1/2"	38	0,700
R	612 BER	6"	150	30	▨	140	1/2"	38	0,740

## BI

Borracha - Núcleo de Ebonite (borracha dura)

Rubber - Hard Rubber Core

Caucho - Núcleo de Caucho Duro (Ebonita)

(75 Shore "A") (-20° ◀ ▶ +80°C)



R 312 BIF

R	210 BIF	2"	50	22	▨	50	1/4"	25	0,065
R	310 BIF	3"	75	22	▨	60	1/4"	25	0,135
R	410 BIF	4"	100	22	▨	70	1/4"	25	0,163
R	312 BIF	3"	75	32	▨	90	3/8"	38	0,215
R	312 BIR	3"	75	32	▨	90	1/2"	38	0,250



R 514 BIR

R	412 BIN	4"	100	32	■	120	1/2"	38	0,355
R	412 BIR	4"	100	32	▨	120	1/2"	38	0,400
R	512 BIN	5"	125	32	■	150	1/2"	38	0,550
R	512 BIR	5"	125	32	▨	150	1/2"	38	0,610
R	612 BIN	6"	150	32	■	175	1/2"	38	0,760
R	612 BIR	6"	150	32	▨	175	1/2"	38	0,810
R	414 BIN	4"	100	38	■	150	1/2"	44	0,420
R	414 BIR	4"	100	38	▨	150	1/2"	44	0,460
R	514 BIN	5"	125	38	■	175	1/2"	44	0,630
R	514 BIR	5"	125	38	▨	175	1/2"	44	0,680
R	614 BIN	6"	150	38	■	200	1/2"	44	0,890
R	614 BIR	6"	150	38	▨	200	1/2"	44	0,950
R	62 BIS	6"	160	50	■	250	15mm	62	1,300

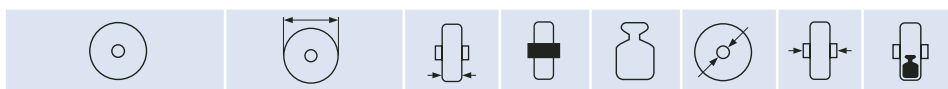
# RODAS / WHEELS / RUEDAS

**VP**

Borracha - Núcleo de Polipropileno

Rubber - Polypropylene Core

Caucho - Núcleo de Polipropileno



**Código / Code**

**mm**

**mm**

**kg**

**mm**

**kg**

(80 Shore "A") (-20° ◀ ▶ +70°C)



R 62 VPR

R	Código / Code	mm	mm	mm	kg	mm	kg	
R	414 VPF	4"	100	35	75	12mm	44,4	0,266
R	514 VPF	5"	125	37	100	12mm	44,4	0,411
R	62 VPF	6"	160	40	135	20mm	58	0,646
R	62 VPR	6"	160	40	135	20mm	58	0,822
R	82 VPF	8"	200	50	205	20mm	58	1,108
R	82 VPR	8"	200	50	205	20mm	58	1,284



R 82 VPT

(80 Shore "A") (-20° ◀ ▶ +70°C)

R	Código / Code	mm	mm	mm	kg	mm	kg	
R	82 VPT	8"	200	50	100	7/8"	100	1,500



# RODAS / WHEELS / RUEDAS

## ZE

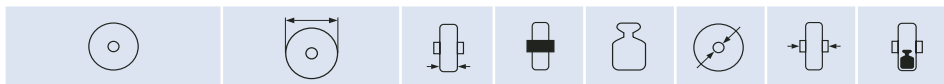
Borracha Elástica Cinza - Núcleo Estampado e Rebitado

Grey Elastic Rubber - Riveted Steel Discs Core

Caucho Elástico Gris - Núcleo de Chapas de Acero Remachadas

(75 Shore "A") (-20° ◀ ▶ +80°C)

NOVEPISO



R 412 SEN

Código / Code		mm	mm		kg	mm	kg		
R	412 ZEN	4"	100	30	■	90	1/2"	38	0,337
R	412 ZER	4"	100	30	▨	90	1/2"	38	0,377
R	512 ZEN	5"	125	30	■	110	1/2"	38	0,480
R	512 ZER	5"	125	30	▨	110	1/2"	38	0,520
R	612 ZEN	6"	150	30	■	140	1/2"	38	0,720
R	612 ZER	6"	150	30	▨	140	1/2"	38	0,760

## ZI

Borracha Cinza - Núcleo de Ebonite (borracha dura)

Grey Rubber - Hard Rubber Core

Caucho Gris - Núcleo de Caucho Duro (Ebonita)

(75 Shore "A") (-20° ◀ ▶ +80°C)

NOVEPISO



R 312 ZIF



R 514 ZIR

R	210 ZIF	2"	50	22	▨	50	1/4"	25	0,070
R	310 ZIF	3"	75	22	▨	60	1/4"	25	0,140
R	410 ZIF	4"	100	22	▨	70	1/4"	25	0,163
R	312 ZIF	3"	75	32	▨	90	3/8"	38	0,225
R	312 ZIR	3"	75	32	▨	90	1/2"	38	0,260

R	412 ZIN	4"	100	32	■	120	1/2"	38	0,370
R	412 ZIR	4"	100	32	▨	120	1/2"	38	0,415
R	512 ZIN	5"	125	32	■	150	1/2"	38	0,570
R	512 ZIR	5"	125	32	▨	150	1/2"	38	0,630
R	612 ZIN	6"	150	32	■	175	1/2"	38	0,800
R	612 ZIR	6"	150	32	▨	175	1/2"	38	0,850
R	414 ZIN	4"	100	38	■	150	1/2"	44	0,440
R	414 ZIR	4"	100	38	▨	150	1/2"	44	0,480
R	514 ZIN	5"	125	38	■	175	1/2"	44	0,660
R	514 ZIR	5"	125	38	▨	175	1/2"	44	0,710
R	614 ZIN	6"	150	38	■	200	1/2"	44	0,940
R	614 ZIR	6"	150	38	▨	200	1/2"	44	1,000
R	62 ZIS	6"	160	50	■	250	15mm	62	1,400

# RODAS / WHEELS / RUEDAS

## BF

Borracha - Núcleo de Ferro

Rubber - Cast Iron Core

Caucho - Núcleo de Hierro

(75 Shore "A") (-20° ◀ ▶ +80°C)



R 52 BFS

Código / Code		mm	mm	mm	kg	mm	kg		
R	312 BFN	3"	75	32	█	90	3/8"	38	0,410
R	312 BFL	3"	75	32	█	90	1/2"	38	0,455
R	312 BFS	3"	75	32	○	90	12mm	38	0,446
R	414 BFN	4"	100	38	█	150	1/2"	44	0,870
R	414 BFL	4"	100	38	█	150	1/2"	44	1,135
R	414 BFS	4"	100	38	○	150	12mm	44	1,260
R	514 BFN	5"	125	38	█	175	1/2"	44	1,195
R	514 BFL	5"	125	38	█	175	1/2"	44	1,190
R	514 BFS	5"	125	38	○	175	12mm	44	1,320
R	614 BFN	6"	150	38	█	200	1/2"	44	1,425
R	614 BFL	6"	150	38	█	200	1/2"	44	1,875
R	614 BFS	6"	150	38	○	200	12mm	44	2,050
R	42 BFL	4"	100	50	█	200	5/8"	62	1,550
R	42 BFS	4"	100	50	○	200	15mm	62	1,650
R	52 BFL	5"	125	50	█	250	5/8"	62	1,860
R	52 BFS	5"	125	50	○	250	15mm	62	2,050
R	62 BFL	6"	150	50	█	300	5/8"	62	2,300
R	62 BFS	6"	150	50	○	300	15mm	62	2,200
R	82 BFL	8"	200	50	█	350	7/8"	62	3,700
R	82 BFS	8"	200	50	○	350	17mm	62	3,600
R	102 BFL	10"	250	50	█	450	1"	62	5,550
R	102 BFS	10"	250	50	○	450	20mm	62	5,350
R	63 BFF AMB	6"	150	60	□	400	1"	68	4,598
R	63 BFF	6"	150	70	□	400	1"	78	4,300
R	63 BFL AMB	6"	150	60	█	400	1"	68	4,598
R	63 BFL	6"	150	70	█	400	1"	78	4,598
R	63 BFS	6"	150	70	○	400	25mm	78	3,720
R	83 BFL	8"	200	70	█	500	1"	78	6,770
R	83 BFS	8"	200	70	○	500	25mm	78	6,670
R	103 BFL	10"	250	70	█	600	1"	78	10,06
R	103 BFS	10"	250	70	○	600	25mm	78	10,33
R	123 BFL	12"	300	70	█	750	1"	78	12,66
R	123 BFS	12"	300	70	○	750	25mm	78	12,42
R	104 BFS	10"	260	100	○	800	25mm	110	16,45
R	124 BFS	12"	300	100	○	1000	30mm	110	19,69
R	165 BFS	16"	406	125	○	1500	35mm	134	41,80
R	205 BFS	20"	508	125	○	1800	40mm	134	56,69

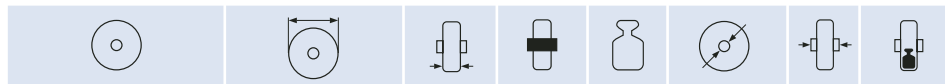
# RODAS / WHEELS / RUEDAS

## EF

Borracha Elástica - Núcleo de Ferro  
Elastic Rubber - Cast Iron Core  
Caucho Elástico - Núcleo de Hierro

(65 Shore "A") (-20° ◀ ▶ +80°C)

### NOVETON



R 52 EFS

Código / Code		mm	mm		kg	mm	mm	kg	
R	52 EFS	5"	125	50		250	15mm	62	1,971
R	62 EFS	6"	150	50		300	15mm	62	2,005
R	82 EFS	8"	200	50		350	17mm	62	3,774
R	102 EFS	10"	250	50		450	20mm	62	5,058
R	63 EFS	6"	150	70		400	25mm	78	3,630
R	83 EFS	8"	200	70		500	25mm	78	6,413

Fabricados em todas as dimensões da série BF / Manufactured in all dimensions of BF serie  
Fabricados en todas las dimensiones de la serie BF

## ES

Borracha Elástica Super Camada - Núcleo de Ferro  
Elastic Rubber Ultra Thick - Cast Iron Core  
Caucho Elástico Super Espesor - Núcleo de Hierro

Impacto e velocidade  
Impact and speed (CUSHION)  
Impacto y velocidad

(65 Shore "A") (-20° ◀ ▶ +80°C)

### NOVETON

#### SUPER CAMADA



R 124 ESY

R	62 ESS	6"	150	50		350	15mm	62	2,502
R	82 ESS	8"	200	50		400	17mm	62	4,710
R	102 ESS	10"	250	50		550	20mm	62	6,312
R	123 ESY	12"	300	70		900	25mm	78	15,220
R	124 ESY	12"	300	100		1200	30mm	110	17,200
R	124 ESM	12"	300	100		1200	30mm	110	17,400
R	129 ESY	12"	300	100		1200	25/35mm	100	17,200
R	165 ESS	16"	406	125		1800	35mm	134	41,470

	Espessura de borracha Rubber thick Espesor de caucho
R 62 ESS/SSS	26 mm
R 82 ESS/SSS	36 mm
R 102 ESS/SSS	36 mm
R 123 ESY/SSY	50 mm
R 124 ESY/SSY	52 mm
R 129 ESY/SSY	64 mm
R 165 ESS/SSS	52 mm

## SS

Borracha Elástica Azul Super Camada - Núcleo de Ferro  
Blue Elastic Rubber Ultra Thick - Cast Iron Core  
Caucho Elástico Azul Super Espesor - Núcleo de Hierro

(65 Shore "A") (-20° ◀ ▶ +80°C)

### NOVESOFT

#### SUPER CAMADA



R 62 SSS

R	62 SSS	6"	150	50		350	15mm	62	2,502
R	82 SSS	8"	200	50		400	17mm	62	4,710
R	102 SSS	10"	250	50		550	20mm	62	6,312
R	123 SSY	12"	300	70		900	25mm	78	15,220
R	124 SSY	12"	300	100		1200	30mm	110	17,200
R	124 SSM	12"	300	100		1200	30mm	110	17,400
R	129 SSY	12"	300	100		1200	25/35mm	100	17,200
R	165 SSS	16"	406	125		1800	35mm	134	41,470

# RODAS / WHEELS / RUEDAS

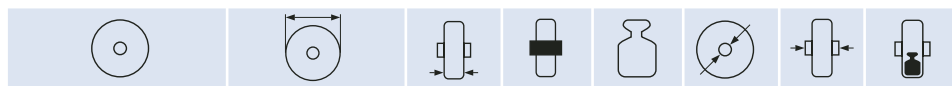
## BD

Borracha - Núcleo Desmontável em Chapas de Aço

Rubber - Demountable Steel Discs Core

Caucho - Núcleo Desarmable en Chapas de Acero

(75 Shore "A") (-20° ◀ ▶ +80°C)



R 62 BDL

Código / Code		mm	mm		kg		mm	kg
R	62 BDL	6"	155	50	☰	200	5/8"	1,495
R	92 BDL	9"	225	45	☰	250	7/8"	2,505
R	102 BDL	10"	250	48	☰	300	7/8"	3,170
R	123 BDL	12"	300	68	☰	350	1"	6,950
R	123 BDS	12"	300	68	☰	350	20mm	6,715
R	153 BDL	15"	380	83	☰	450	1"	9,955
R	153 BDS	15"	380	83	☰	450	20mm	9,670

## QE

Pneumática (4 lonas) - Núcleo de Chapas de Aço

Pneumatic (4 fabrics) - Steel Discs Core

Neumática (4 telas) - Núcleo de Chapa de Acero

(-20° ◀ ▶ +50°C)



R 358 QES

R	358 QEL	15"	380	88	☰	200	1"	78	4,386
R	358 QES	15"	380	88	☰	200	25mm	86	4,186
R	408 QEL	16"	410	105	☰	300	1"	78	5,042
R	408 QES	16"	410	105	☰	300	25mm	86	4,842

R 254 30 psi

R 354 30 psi

R 358 40 psi

R 408 40 psi

## QA

Pneumática (2 lonas) - Núcleo de Alumínio

Pneumatic (2 fabrics) - Aluminum Discs Core

Neumática (2 telas) - Núcleo de Alumínio

(-20° ◀ ▶ +50°C)



R 354 QAS

R	254 QAN	8"	212	60	☰	100	7/8"	62	0,962
R	254 QAL	8"	212	60	☰	100	7/8"	62	0,971
R	254 QAS	8"	212	60	☰	100	17mm	62	1,109
R	354 QAN	10"	265	85	☰	180	7/8"	62	1,437
R	354 QAL	10"	265	85	☰	180	7/8"	62	1,446
R	354 QAS	10"	265	85	☰	180	17mm	62	1,584



R 408 QAS

R	358 QAN	15"	380	88	☰	200	1"	78	3,503
R	358 QAL	15"	380	88	☰	200	1"	78	3,253
R	358 QAS	15"	380	88	☰	200	25mm	78	3,353
R	408 QAN	16"	410	105	☰	300	1"	78	4,292
R	408 QAL	16"	410	105	☰	300	1"	78	4,042
R	408 QAS	16"	410	105	☰	300	25mm	78	4,412

# RODAS / WHEELS / RUEDAS

## UF

Poliuretano Moldado - Núcleo de Ferro  
Moulded Polyurethane - Cast Iron Core  
Poliuretano Moldeado - Núcleo de Hierro

(90 Shore "A") (-40° ◀ ▶ +80°C)



R 52 UFS

Código / Code		mm		mm		kg		mm	kg
R	312 UFN	3"	75	32	■	200	3/8"	38	0,400
R	312 UFL	3"	75	32	■	200	1/2"	38	0,445
R	312 UFS	3"	75	32	○	200	12mm	38	0,436
R	414 UFN	4"	100	38	■	350	1/2"	44	0,855
R	414 UFL	4"	100	38	■	350	1/2"	44	1,055
R	414 UFS	4"	100	38	○	350	12mm	44	1,180
R	514 UFN	5"	125	38	■	400	1/2"	44	1,120
R	514 UFL	5"	125	38	■	400	1/2"	44	1,115
R	514 UFS	5"	125	38	○	400	12mm	44	1,240
R	614 UFN	6"	150	38	■	450	1/2"	44	1,350
R	614 UFL	6"	150	38	■	450	1/2"	44	1,785
R	614 UFS	6"	150	38	○	450	12mm	44	2,012
R	316 UFS	3"	75	48	○	500	15mm	48	0,770
R	42 UFL	4"	100	50	■	500	5/8"	62	1,500
R	42 UFS	4"	100	50	○	500	15mm	62	1,600
R	52 UFL	5"	125	50	■	600	5/8"	62	1,760
R	52 UFS	5"	125	50	○	600	15mm	62	1,950
R	62 UFL	6"	150	50	■	700	5/8"	62	2,200
R	62 UFS	6"	150	50	○	700	15mm	62	2,100
R	82 UFL	8"	200	50	■	900	7/8"	62	3,600
R	82 UFS	8"	200	50	○	900	17mm	62	3,500
R	102 UFL	10"	250	50	■	1200	1"	62	5,450
R	102 UFS	10"	250	50	○	1200	20mm	62	5,250
R	63 UFL	6"	150	70	■	1000	1"	78	3,700
R	63 UFS	6"	150	70	○	1000	25mm	78	3,800
R	83 UFL	8"	200	70	■	1200	1"	78	6,520
R	83 UFS	8"	200	70	○	1200	25mm	78	6,140
R	103 UFL	10"	250	70	■	1300	1"	78	10,21
R	103 UFS	10"	250	70	○	1300	25mm	78	10,08
R	123 UFL	12"	300	70	■	1400	1"	78	12,42
R	123 UFS	12"	300	70	○	1400	25mm	78	11,82
R	104 UFS	10"	250	100	○	1800	30mm	110	15,00
R	124 UFS	12"	300	100	○	2000	30mm	110	18,09
R	165 UFS	16"	390	125	○	2800	35mm	134	37,20

(90 Shore "A") (-40° ◀ ▶ +80°C)

**Uso continuado em alta temperatura**  
**Continued use in high temperature / Uso continuo en alta temperatura**

R	82 UFSTEMP	8"	200	50	○	900	17mm	62	3,50
R	102 UFSTEMP	10"	250	50	○	1200	20mm	62	5,25

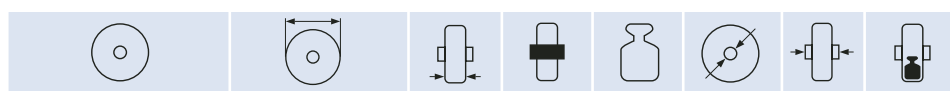


R 82 UFS TEMP

# RODAS / WHEELS / RUEDAS

## UX

Poliuretano Moldado "Extra" - Núcleo de Ferro  
 Moulded Polyurethane "Extra" - Cast Iron Core  
 Poliuretano Moldeado "Extra" - Núcleo de Hierro



**Código / Code**                      **mm**                      **mm**                      **kg**                      **mm**                      **kg**

(95 Shore "A") (-40° ◀ ▶ +100°C)

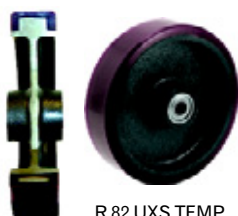
R	Código / Code	mm	mm	mm	kg	mm	kg
R	82 UXS	8"	200	50	900	17mm	3,500
R	102 UXS	10"	250	50	1200	20mm	5,250
R	83 UXS	8"	200	70	1200	25mm	6,140
R	103 UXS	10"	250	70	1300	25mm	10,08
R	123 UXS	12"	300	70	1400	25mm	11,82

Extra



R 82 UXS

\*Disponível em todas as dimensões da série UF / Available for all wheels of serie UF /  
 Disponible en todas las dimensiones de la serie UF



R 82 UXS TEMP

(95 Shore "A") (-40° ◀ ▶ +100°C)

**Usado contínuo em alta temperatura**  
**Continued use in high temperature / Uso continuo en alta temperatura**

R	Código / Code	mm	mm	mm	kg	mm	kg
R	82 UXSTEMP	8"	200	50	900	17mm	3,500
R	102 UXSTEMP	10"	250	50	1200	20mm	5,250

## UY

Poliuretano Moldado "Super" - Núcleo de Ferro  
 Moulded Polyurethane "Super" - Cast Iron Core  
 Poliuretano Moldeado "Super" - Núcleo de Hierro

Raio de abaulamento	
R 52 UYS	210 mm
R 62 UYS	210 mm
R 62 UYS	210 mm
R 62 UYS	210 mm

(60 Shore "D") (-40° ◀ ▶ +80°C)

Super



R 62 UYS

R	Código / Code	mm	mm	mm	kg	mm	kg
R	52 UYS	5"	123	50	600	15mm	1,950
R	62 UYS	6"	148	50	700	15mm	2,100
R	82 UYS	8"	198	50	900	17mm	3,500
R	102 UYS	10"	248	50	1200	20mm	5,250

\*Disponível em todas as dimensões da série UF / Available for all wheels of serie UF /  
 Disponible en todas las dimensiones de la serie UF

## UR

Rodas para Transpaletes - Poliuretano Moldado  
 Rollers for Pallet Trucks - Moulded Polyurethane  
 Ruedas para Transpaletas - Poliuretano Moldeado

(90 Shore "A") (-40° ◀ ▶ +80°C)



R 335 URS

R	Código / Code	mm	mm	mm	kg	mm	kg
R	335 URS	3"	76	90	700	15mm	1,335
R	336 URS	3"	76	90	700	17mm	1,220
R	337 URS	3"	76	90	700	20mm	1,065
R	345 URS	3"	80	90	900	15mm	1,380
R	346 URS	3"	80	90	900	17mm	1,280
R	347 URS	3"	80	90	900	20mm	1,110
R	355 URS	3"	85	100	1000	15mm	1,980
R	356 URS	3"	85	100	1000	17mm	1,885
R	357 URS	3"	85	100	1000	20mm	1,685

# RODAS / WHEELS / RUEDAS

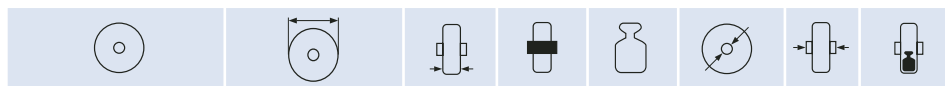
## FV

Ferro - Canal em "V"  
Cast Iron - "V" Grooved  
Hierro - Canal en "V"

(190 Brinell) (-40° ◀ ▶ +400°C)



R 62 FVZ



Código / Code		mm	mm		kg	mm	kg		
R	414 FVZ	4"	100	38		300	5/8"	44	1,495
R	42 FVL	4"	100	51		450	5/8"	62	2,015
R	62 FVZ	6"	150	50		600	7/8"	62	3,800
R	62 FVL	6"	150	50		600	7/8"	62	3,665
R	83 FVZ	8"	200	70		1100	1"	78	8,645
R	83 FVL	8"	200	70		1100	1"	78	8,385

	E	F	G	Perfil "L" / Track / Carril
R 414 FVZ	22	11	16	38 x 38
R 42 FVL	19	9,5	17,5	38 x 38
R 62 FVZ	22	11	16	38 x 38
R 62 FVL	22	11	16	38 x 38
R 83 FVZ	42	21	15	50 x 50
R 83 FVL	42	21	15	50 x 50



## FD

Ferro para Trilho - "Decauville"  
Cast Iron Single-Flanged Rail  
Hierro para Carril

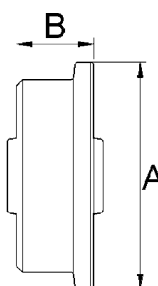
(190 Brinell) (-40° ◀ ▶ +400°C)



R 102 FDS

R	514 FDL	5"	125	39		400	5/8"	62	2,680
R	42 FDL	4"	100	52		550	7/8"	68	3,595
R	42 FDS	4"	100	52		550	25mm	68	3,595
R	62 FDL	6"	150	48		700	1"	70	5,730
R	82 FDL	8"	200	50		900	1"	70	10,29
R	102 FDL	10"	250	48		1200	1"	78	13,73
R	102 FDS	10"	250	48		1200	25mm	78	13,22
R	122 FDL	12"	300	50		1400	1"	78	21,63
R	122 FDS	12"	300	50		1400	25mm	78	21,35
R	63 FDS	6"	150	65		1000	25mm	84	7,490
R	83 FDS	8"	200	65		1200	25mm"	90	10,90

	B	A	Perfil "L" / Track / Carril
R 514 FDL	50	148	1.1/2"
R 42 FDL	63	124	TR 25
R 42 FDS	63	124	TR 25
R 62 FDL	60	185	TR 25
R 82 FDL	64	242	TR 25
R 102 FDL	60	288	TR 25
R 102 FDS	60	288	TR 25
R 122 FDL	66	340	TR 25
R 122 FDS	66	340	TR 25
R 63 FDS	80	190	TR 37
R 83 FDS	80	240	TR 37



# RODAS / WHEELS / RUEDAS

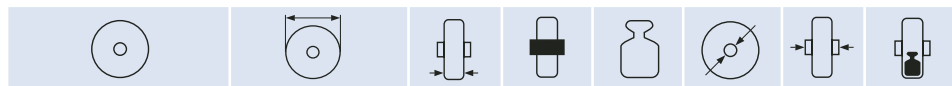
## FF

Ferro  
Cast Iron  
Hierro

(160 Brinell) (-40° ◀ ▶ +400°C)



R 52 FFL



Código / Code		mm	mm		kg	mm	kg		
R	210 FFF	2"	50	20		120	1/4"	25	0,155
R	312 FFN	3"	75	32		200	3/8"	38	0,470
R	312 FFZ	3"	75	32		200	3/8"	38	0,500
R	414 FFN	4"	100	38		350	1/2"	44	0,983
R	414 FFZ	4"	100	38		350	1/2"	44	1,010
R	514 FFN	5"	125	38		400	1/2"	44	1,215
R	514 FFZ	5"	125	38		400	1/2"	44	1,242
R	52 FFN	5"	125	50		600	5/8"	62	1,910
R	52 FFL	5"	125	50		600	5/8"	62	2,170
R	52 FFS	5"	125	50		600	15mm	62	2,050
R	62 FFN	6"	150	50		700	5/8"	62	2,530
R	62 FFL	6"	150	50		700	5/8"	62	2,630
R	62 FFS	6"	150	50		700	15mm	62	2,525
R	82 FFN	8"	200	50		900	7/8"	62	3,770
R	82 FFL	8"	200	50		900	7/8"	62	4,455
R	82 FFS	8"	200	50		900	17mm	62	4,590
R	102 FFL	10"	250	50		1200	1"	62	6,715
R	102 FFS	10"	250	50		1200	20mm	62	5,740
R	63 FFL	6"	150	70		1000	1"	78	5,085
R	63 FFS	6"	150	70		1000	25mm	78	4,915
R	83 FFL	8"	200	70		1200	1"	78	7,045
R	83 FFS	8"	200	70		1200	25mm	78	7,040
R	103 FFL	10"	250	70		1300	1"	78	10,75
R	103 FFS	10"	250	70		1300	25mm	78	10,42
R	123 FFL	12"	300	70		1400	1"	78	13,05
R	123 FFS	12"	300	70		1400	25mm	78	12,64
R	84 FFS	8"	210	100		1400	25mm	110	13,22
R	104 FFS	10"	255	100		1800	30mm	110	14,67
R	145 FFS	14"	350	125		2300	35mm	134	23,00
R	185 FFS	18"	450	125		3300	40mm	134	38,00

## FR

Ferro Reforçada  
Reinforced Cast Iron  
Hierro Reforzada

(160 Brinell) (-40° ◀ ▶ +400°C)



R 52 FRY

R	52 FRY	5"	125	50		700	17mm	62	2,829
R	62 FRY	6"	150	50		850	17mm	62	3,585
R	82 FRY	8"	200	50		900	17mm	62	7,480
R	63 FRY	6"	150	70		1200	25mm	78	7,126
R	83 FRY	8"	200	70		1400	25mm	78	11,48



# COMPONENTES DE RODAS

## WHEEL COMPONENTS / COMPONENTES DE RUEDAS

### BD



=



+



Roda Wheel / Rueda			
R	62 BDL	6"	≡
R	92 BDL	9"	≡
R	102 BDL	10"	≡
R	123 BDL	12"	≡
R	123 BDS	12"	⊙
R	153 BDL	15"	≡
R	153 BDS	15"	⊙

Aro Tread / Llanta	
A	62 BD
A	92 BD
A	102 BD
A	123 BD
A	123 BD
A	153 BD
A	153 BD

Núcleo Core / Núcleo	
N	62 BDL
N	92 BDL
N	102 BDL
N	123 BDL
N	123 BDS
N	153 BDL
N	153 BDS

### QE



=



+



+



Roda Wheel / Rueda			
R	358 QEL	15"	≡
R	358 QES	15"	⊙
R	408 QEL	16"	≡
R	408 QES	16"	⊙

Pneu Tyre / Llanta	
P	358
P	358
P	408
P	408

Câmara Inner tube / Cámara	
C	358
C	358
C	408
C	408

Núcleo Core / Núcleo	
N	8 QEL
N	8 QES
N	8 QEL
N	8 QES

### QA



=



+



+



R	254 QAN	8"	≡
R	254 QAL	8"	≡
R	254 QAS	8"	⊙
R	354 QAN	10"	≡
R	354 QAL	10"	≡
R	354 QAS	10"	⊙
R	358 QAN	15"	≡
R	358 QAL	15"	≡
R	358 QAS	15"	⊙
R	408 QAN	16"	≡
R	408 QAL	16"	≡
R	408 QAS	16"	⊙

P	254
P	254
P	254
P	354
P	354
P	354
P	358
P	358
P	358
P	408
P	408
P	408

C	254
C	254
C	254
C	354
C	354
C	354
C	358
C	358
C	358
C	408
C	408
C	408

N	4 QAN
N	4 QAL
N	4 QAS
N	4 QAN
N	4 QAL
N	4 QAS
N	8 QAN
N	8 QAL
N	8 QAS
N	8 QAN
N	8 QAL
N	8 QAS